

A stylized graphic of an eye, composed of dark blue and yellow curved segments.

# ACTIVE EYE

## USER GUIDE

**Seven Telematics Ltd.**  
[sales@seventelematics.com](mailto:sales@seventelematics.com)  
+44 (0)1636 550320



The ActiveEye logo, a stylized eye shape composed of dark blue and yellow segments.

# ACTIVE EYE

## USER GUIDE

# Contents

01. Introduction	4
02. Installing the Software	4
03. Removing / Inserting SD Card	5
04. Loading a Video Clip	6
05. Changing Settings For First Time	7
06. Playing Video Footage	8
07. Event Triggers	9
08. Changing The Map Display	10
09. Exporting An Image	11
10. Generating Reports	12
11. Exporting Video Footage	14
12. Backing Up The Footage	15
13. VDR SD Card Settings	16

# ACTIVE EYE USER GUIDE

## 01. Introduction

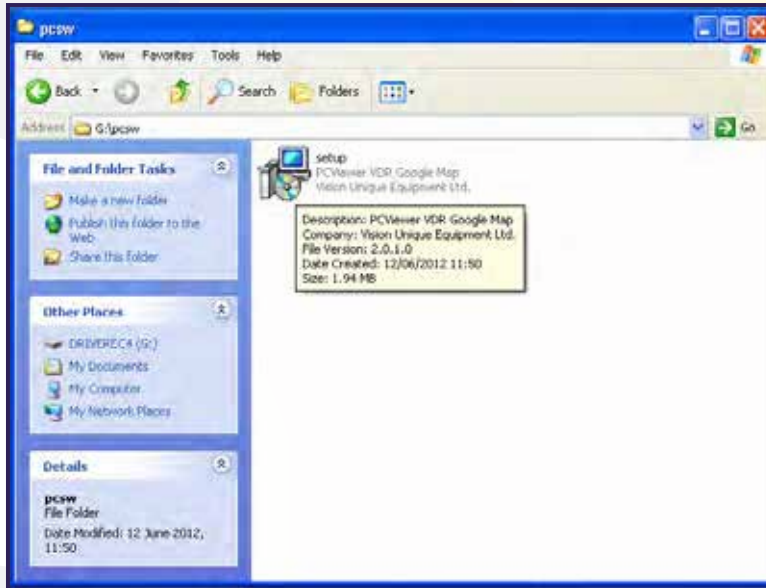
This is a basic user guide on how to install and use the VDR PC Viewer software and will help familiarise you with the most commonly used features within the software.

## 02. Installing the Software

Every SD card provided with the VDR will contain the PC Viewer software which will be located in a folder named 'pcsw'. Insert your SD card into your PC device and then browse to the 'pcsw' folder; here you will find the 'Setup' icon.

Double clicking the 'Setup' icon will begin the installation process.





Once the installation is complete the VDR PC Viewer can be opened.

### 03. Removing / Inserting SD Card


Before removing or insert the SD card from / to the VDR unit, first ensure the VDR is completely powered down and the BLUE LED located on the driver panic switch is OFF. Once the blue LED is off it is safe to remove / insert the SD card.



#### **IMPORTANT NOTE**


***IF YOUR VEHICLE IS FITTED WITH A DELAY TIMER THEN THE VDR UNIT WILL NOT POWER OFF UNTIL THE SET DELAY TIME HAS LAPSED. DO NOT REMOVE / INSERT THE SD CARD UNTIL THE VDR UNIT HAS COMPLETELY POWERED DOWN AND THE BLUE LED ON THE DRIVER PANIC SWITCH HAS TURNED OFF***

Before removing the SD card from your PC ensure the SD card has been ejected by selecting 'Tool' from the main toolbar, then selecting 'Eject SD card'. It will now be safe to remove the SD card from the PC.

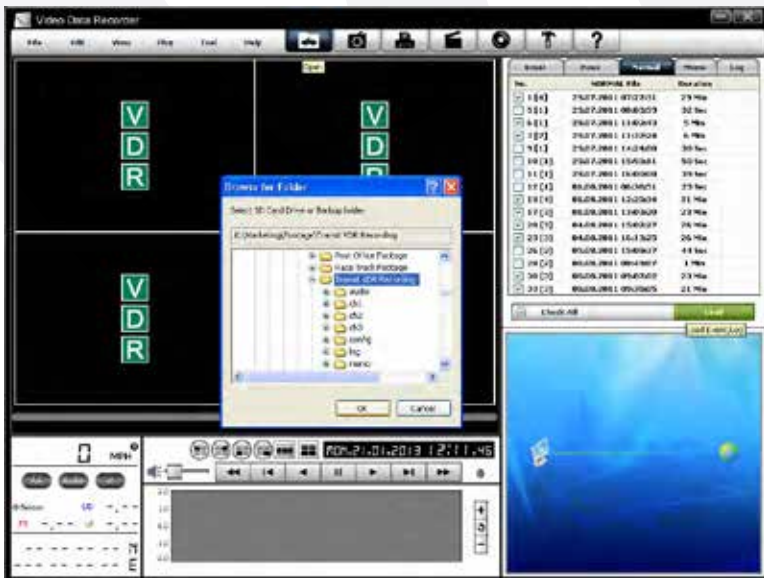
## 04. Loading a Video Clip

After opening the VDR PC Viewer software the first step is to load video footage into the PC Viewer which can be done by pressing the  button on the main toolbar then browsing to your footage location either on the SD card or on your PC.

This will then display all the journey recordings located in that file which are placed in order of date / time and also displays the total journey time. You must now select which journeys you would like to view by ticking the files individually or pressing the  button. Once you are happy with your selection press the  button.

The system records in 60 minute blocks so any journeys that have taken place that lasted longer than 60 minutes would be displayed as multiple files in the playlist. Split files can still be played continuously by selecting the  button which will then automatically play the next clip loaded into the playlist.

***NOTE:*** *The journey records from the point the ignition is turned ON to when the ignition is turned back OFF. Systems fitted with a VUE Delay Timer will record for the specified time period after the ignition is switched OFF.*



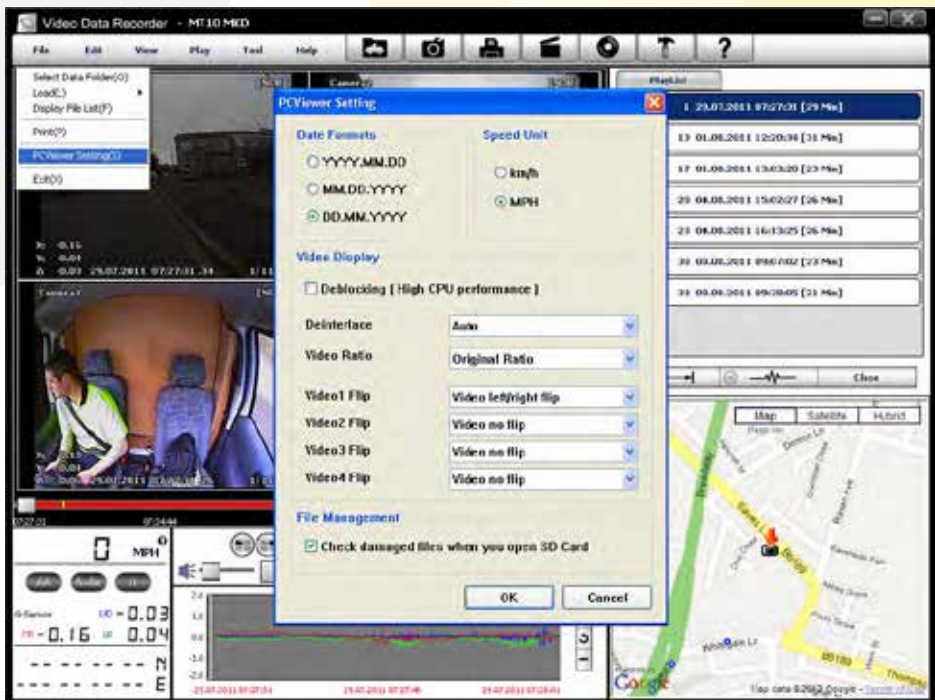
## 05. Changing Settings For First Time

The first time you open the PC Viewer software or if using a shared PC you may need to adjust the settings to suit your preferences.

To do this click file then select 'PCViewer Setting' this will bring up a dialog box that will allow you to change the date format, speed units and video flip options.

Once you have the desired settings press the  button; the PC Viewer software will then remember your preferences next time you open the software. Pressing the 'Play' or 'Skip Frame' buttons will refresh the viewer to display the changes made.

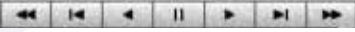
***NOTE:*** If your vehicle has a reverse camera that is viewable on an internal monitor within the vehicle then you may need to set the rear camera to 'Video left/right flip'




## 06. Playing Video Footage

Playing the footage works very similar to many standard media players. The selected journeys appear in the Play List on the right hand of the screen and can be viewed by clicking on the desired file.



The video playback buttons  allows the footage to be played, paused, etc. and also has frame skip function allowing footage to be viewed one frame at a time.

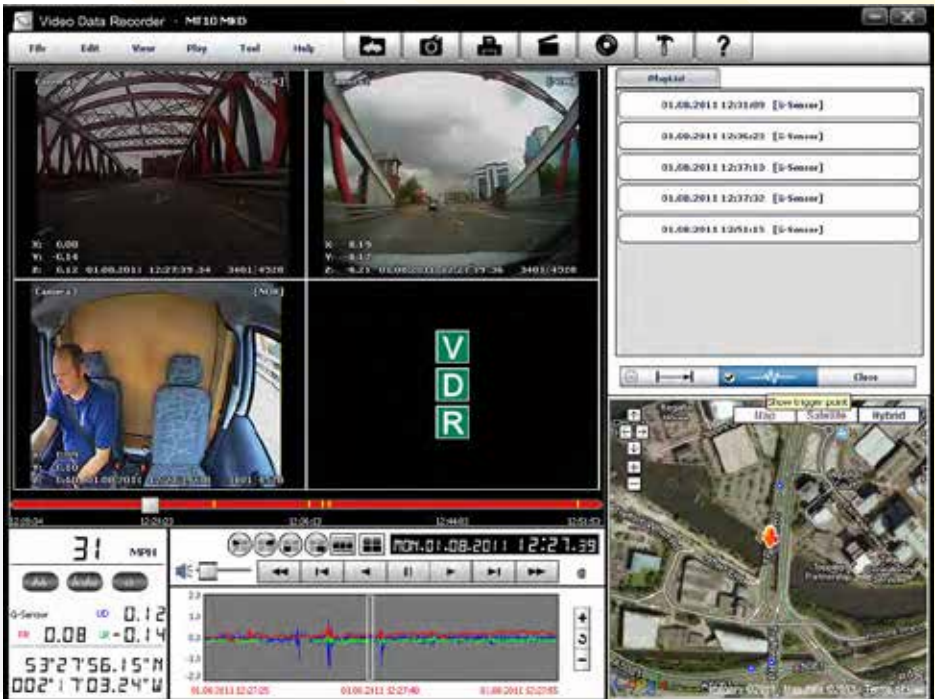
The viewer can also be setup to display all 4 camera screens or each camera screen individually by using the display buttons  positioned above the playback buttons.


**NOTE:** When less than 4 cameras are installed to the vehicle the vacant camera view will display the VDR logo.




## 07. Event Triggers

Each time the VDR system detects an incident such as excessive G-Sensor readings or a driver activated panic mode, etc the footage timeline will be marked with a yellow line. This allows the user to quickly identify any points of interest within the footage.



In addition selecting the  button will list each of the triggered events in the playlist with the date and time and also the cause of the trigger such as [G-Sensor] if caused by excessive G-Sensor readings or [Switch] if caused by the driver activating the panic switch. Selecting each event will skip to that point in the video footage ready to be played.


Selecting the  button again will hide the trigger points and the playlist will return back to the default journey playlist

## 08. Changing The Map Display

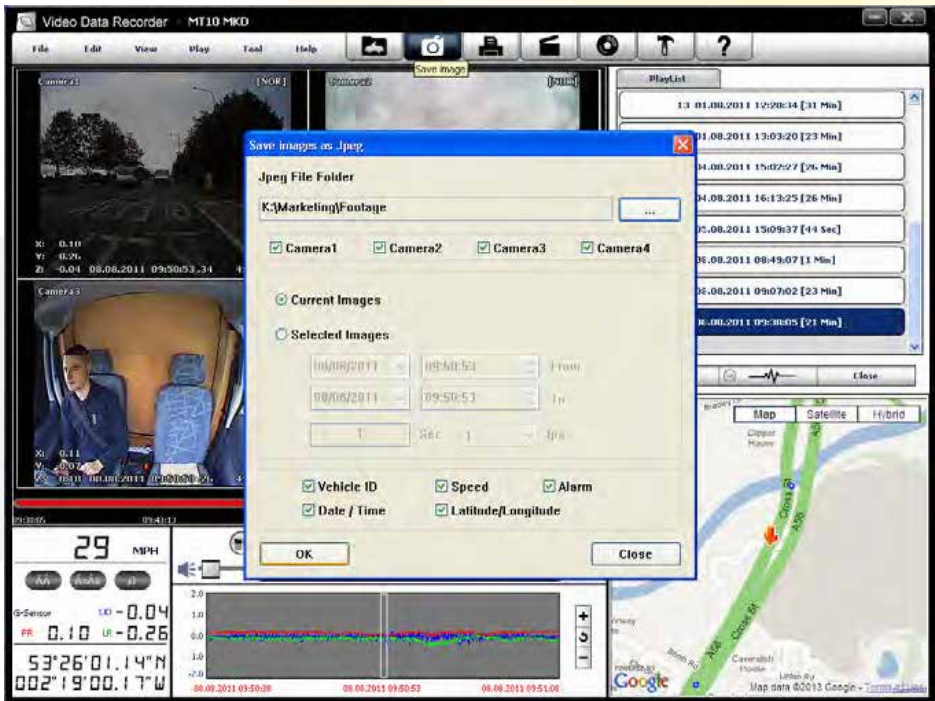
The VDR map display is powered by Google Maps; the view can be switched between Map, Satellite, and Hybrid views. In addition the pan and zoom buttons the level of zoom can be adjusted to adjust the map display.




## 09. Exporting An Image

Camera views can be exported as an image which is done by clicking the  button on the main toolbar then specifying the desired settings. Here you can choose to export the current images at the present frame or specify a range of images by adjusting the 'from' and 'to' times and specifying the number of images per second you require.

The functions such Vehicle ID, Speed, Date / Time, etc can be selected and will appear as an overlay text on the image.



## 10. Generating Reports

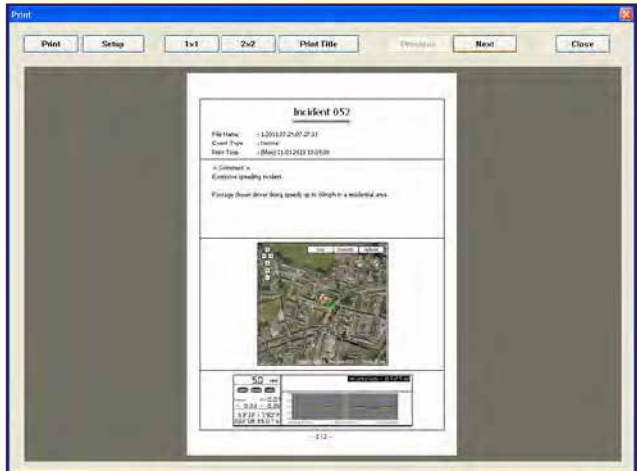
A printable report can be generated by pressing the  button on the main toolbar then specifying the desired settings to which the desired printer can be changed later in the process. After pressing the  button you will be prompted to specify a title for the report and also enter any comments relevant to the incident



Once confirmed a preview of the report will be shown which will contain the report title and comments detailed along with the Map Window showing the GPS location, the Speed and G-Sensor toolbar and image stills from each of camera views.


Selecting the **2x2** button will change the layout of the second pages to display all four camera views on one page whilst selecting **1x1** will display each camera view on individual pages.

**NOTE:** At this stage users can change any printer preferences and can also change which printer the report will be printed on by clicking the **Setup** button.



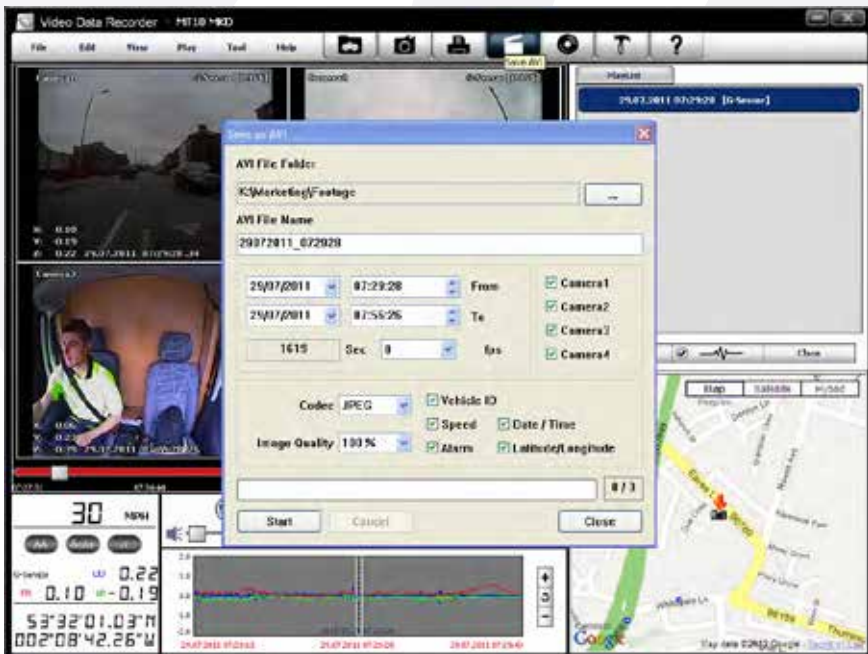


## 11. Exporting Video Footage


The video footage can be exported as an AVI file for viewing on many standard media players on PC's that don't have the VDR PC Viewer software. This is done by clicking the  button on the main toolbar then specifying the desired settings.

Here you can choose to export all or part of the footage by adjusting the 'from' and 'to' times. Adjusting the frames per second 'fps', 'Codec' and 'Image Quality' will determine the quality of the exported video. The functions such Vehicle ID, Speed, Date / Time, etc can be selected and will appear as an overlay text on the video footage.

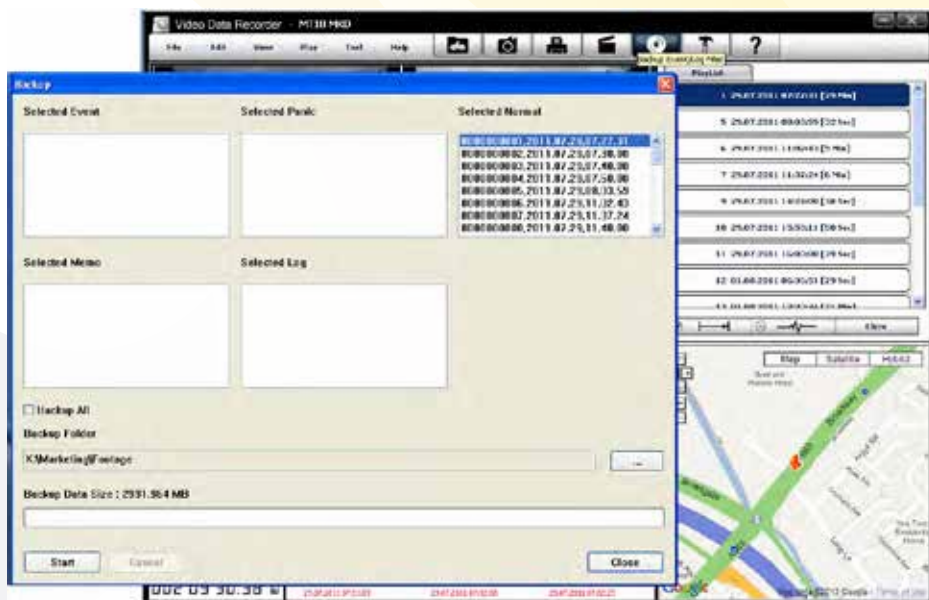
***NOTE: The maximum 'fps' rate will vary depending on your VDR recording settings. Selecting higher values will produce better quality exported footage however will also result in longer file sizes and exporting time.***



## 12. Backing Up The Footage

If you want to save the footage onto your PC as a backup or to clear the SD card to allow new footage to be recorded then this can be done by pressing the  button on the main toolbar.

It is advised that the 'Backup All' option is ticked as then all footage from the SD card will then be copied to your specified location. If you only wish to backup the selected clip then this can be done by selecting your chosen footage file.



The default file names correspond with the playlist titles; the first 10 digits before the separating comma refers to the journey number which in the playlist omits the starting zero digits. The next 8 digits correspond with the file date of recording whilst the last 6 digits correspond with the footage start time.


000000001,2011.07.29,07.27.31  
/ | |  
Journey Number Date Start Time

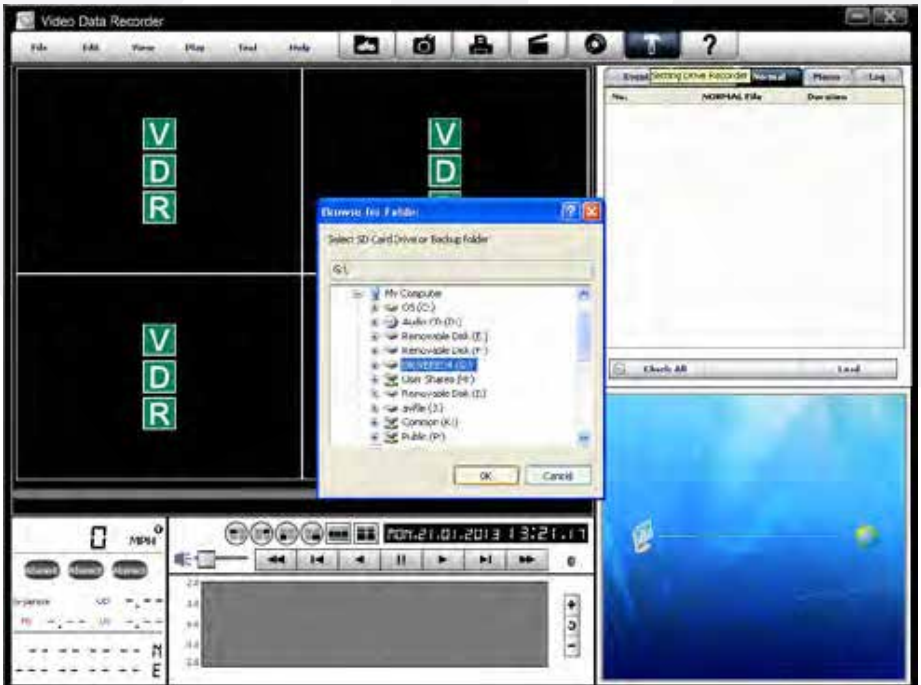
Clicking the  button will begin the backup process.

### 13. VDR SD Card Settings

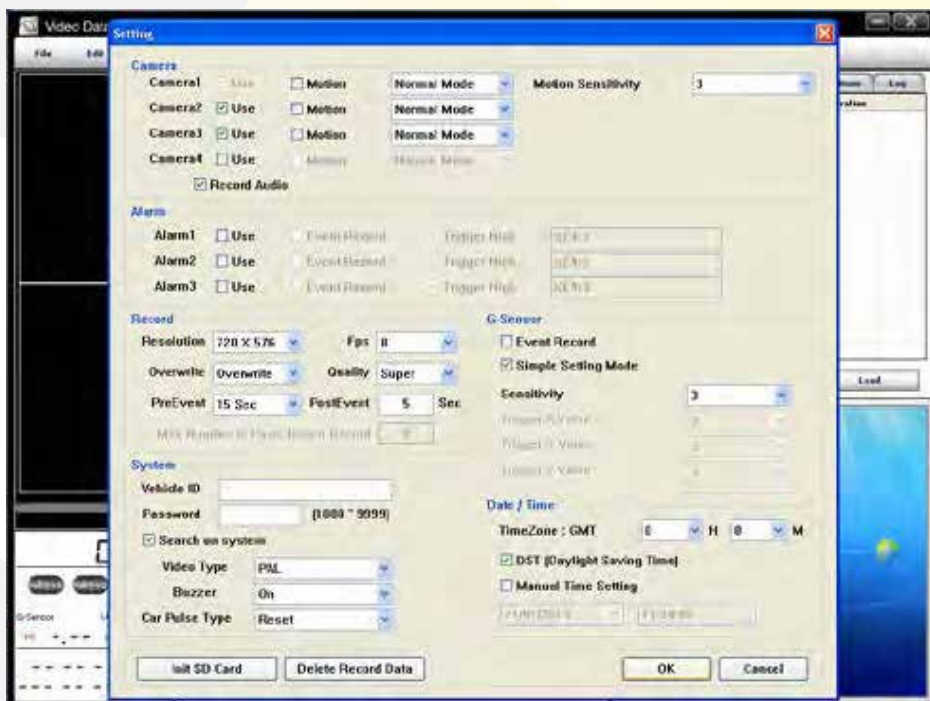
Important Note: VDR SD Card settings should only be configured or modified by those with sufficient technical knowledge to do so correctly. Changing the settings detailed within this section may result in the VDR system not working correctly.

The settings on the VDR SD Card will be preconfigured to the required settings for the system to work as specified. However settings may need to be changed occasionally such as when cameras are added or removed from the system.

To access the SD card settings first insert the card into your PC device and click the button on the main toolbar. You will then need to browse to the desired SD card and press the  button.







The settings dialog box will appear which will allow settings to be changed such as adding or removing cameras or alarm functions, G-Sensor settings, recording quality and also recording options such as whether the system records constantly, only on event or on motion detection.

In addition all the footage currently on the SD card can be deleted by selecting the **Delete Record Data** button.

A blank SD card can also be configured for use with the VDR system on this page by clicking the **Init SD Card** button and browsing to the desired SD card. The SD card can then be formatted by pressing the button **Start**. Once the SD card has been formatted the settings should then be adjusted to suit the desired settings.

Clicking the **OK** will confirm any changes made.

# Notes

## Notes

For further information on the products and services offered by Seven Telematics please visit **[www.seventelematics.com](http://www.seventelematics.com)**

Seven Telematics reserves the right to make improvements to the products described in this manual at any time and without any notice.

Seven Telematics cannot accept liability for any damages or loss of information resulting from the use of information contained in this document.

All rights reserved. © Copyright 2014 Seven Telematics Ltd. NG24 1RZ



For further information on the products and services offered by Seven Telematics please visit [www.seventelematics.com](http://www.seventelematics.com)

**ActiveEye User Guide**  
TEC\_20140313\_ActiveEye\_UserGuide